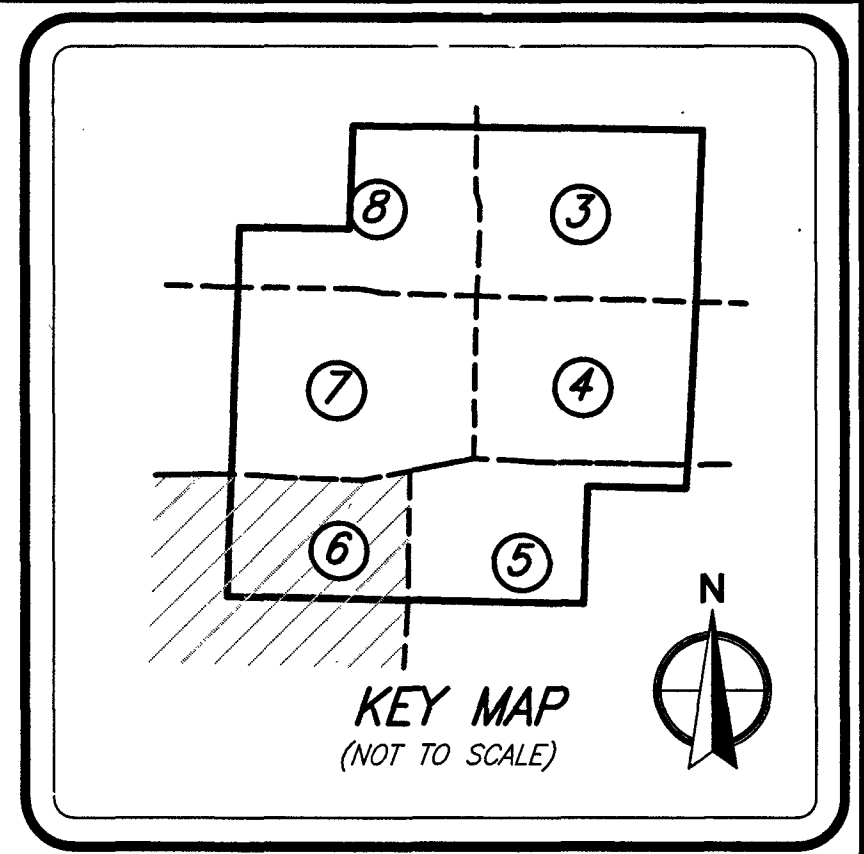


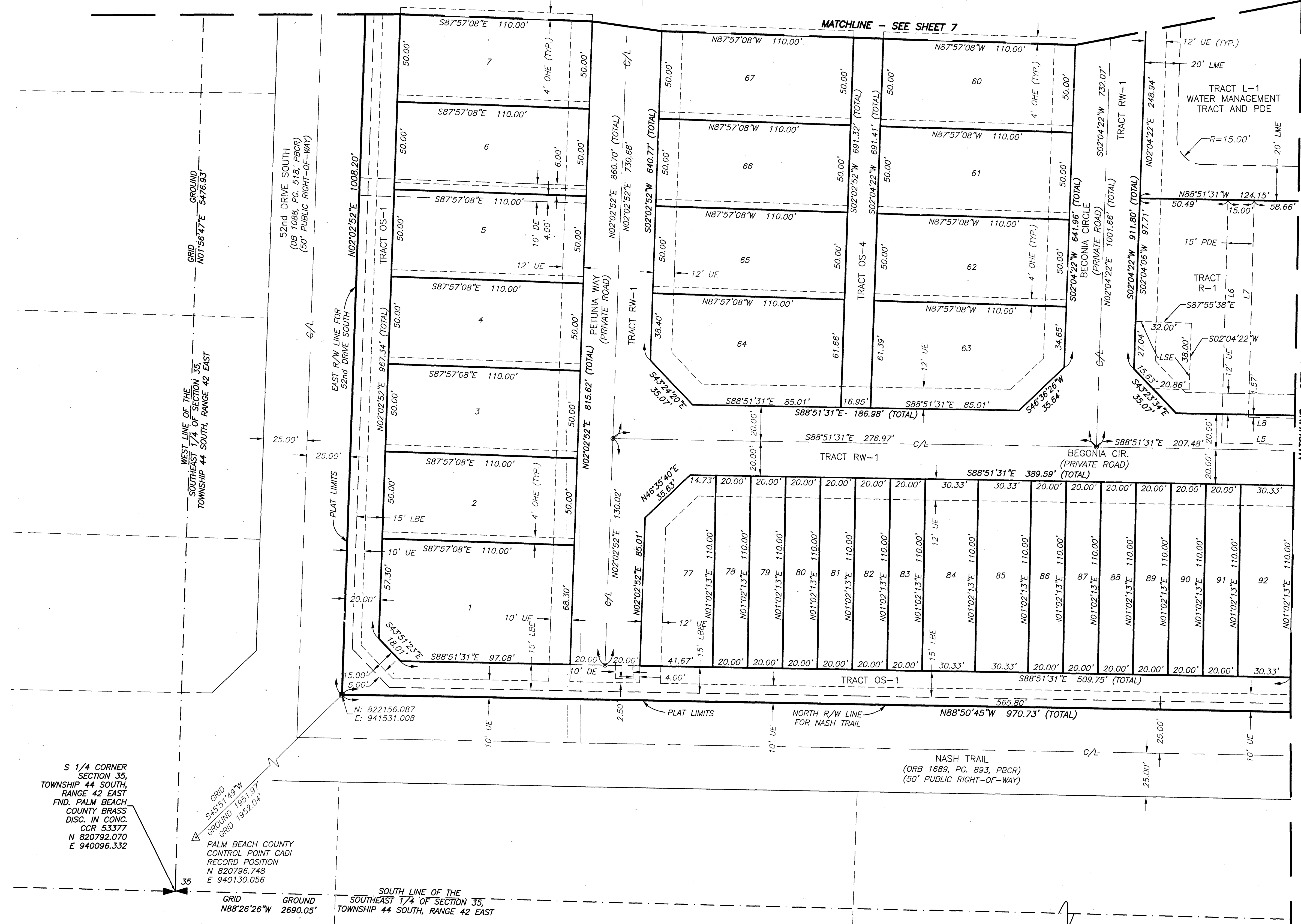
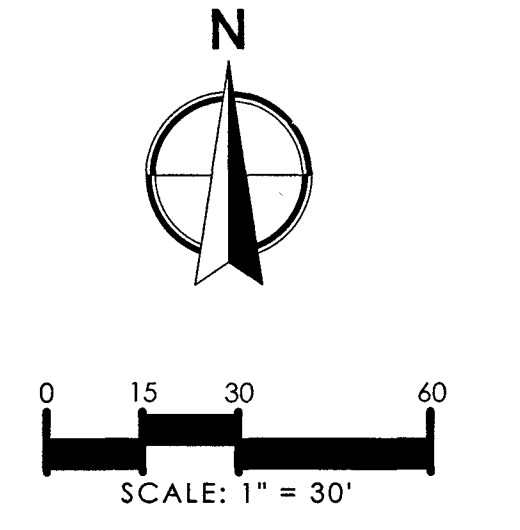
# BLOSSOM TRAIL

BEING A PARCEL OF LAND LYING WITHIN A PORTION OF THE NORTHEAST QUARTER (NE 1/4) OF THE SOUTHEAST QUARTER (SE 1/4) OF SECTION 35, TOWNSHIP 44 SOUTH, RANGE 42 EAST, CITY OF GREENACRES, PALM BEACH COUNTY, FLORIDA.



# 132

SHEET 6 OF 8 SHEETS



### LEGEND

- AE = Access Easement
- C/L = Center Line
- CCR = Certified Corner Record
- CONC. = Concrete
- CB = Cord Bearing
- CD = Cord Distance
- Δ = Delta (Central Angle)
- DE = Drainage Easement
- Found = Found
- FND. = Found
- LSE = Lift Station Easement
- LME = Lake Maintenance Easement
- LMAE = Lake Maintenance Access Easement
- L = Length of Arc
- LBE = Landscape Buffer Easement
- LWDD = Lake Worth Drainage District
- NAD = North American Datum
- (NR) = Non Radial
- OHE = Roof Overhang Easement
- ORB = Official Records Book
- ⊙ = Permanent Control Point (PCP)
- PBCR = Palm Beach County Records
- PCN = Parcel Control Number
- PDE = Public Drainage Easement
- PG = Page
- PB = Plat Book
- PRM = Permanent Reference Monument
- R = Radius
- OHE = Maintenance and Roof Overhang Easement
- R/W (TYP.) = Right-of-Way
- UE = Utility Easement
- = Set 4"x4" Concrete (PRM) w/Aluminum Disc Stamped "LB 7055 PRM" Unless Otherwise Noted
- = Set Nail & Brass Disc Stamped "LB 7055 PRM" Unless Otherwise Noted

LINE	BEARING	DIST
L5	N88°36'36"W	62.14'
L6	N01°37'20"E	139.15'
L7	S01°37'20"W	124.09'
L8	S88°36'36"E	61.76'

S 1/4 CORNER SECTION 35, TOWNSHIP 44 SOUTH, RANGE 42 EAST, FND. PALM BEACH COUNTY BRASS DISC, IN CONC. GCR 53377 N 820792.070 E 940096.332

PALM BEACH COUNTY CONTROL POINT CADI RECORD POSITION N 820796.748 E 940130.056

SOUTH LINE OF THE SOUTHEAST 1/4 OF SECTION 35, TOWNSHIP 44 SOUTH, RANGE 42 EAST

**WGI**  
 2035 Vista Parkway, West Palm Beach, FL 33411  
 Phone No. 866.909.2220 www.wginc.com  
 Cert No. 6091 - LB No. 7055  
 THIS INSTRUMENT WAS PREPARED BY KELSEY M. SMITH, P.S.M. PROFESSIONAL SURVEYOR AND MAPPER, LICENSE NO. 7096 FOR THE FIRM: WGI, INC.